

# Parental Controls & Privacy Protection

The privacy settings on your child's smartphone give you control over how the information stored on it can be used. You can turn off location services, for example, to keep their whereabouts private or stop apps from accessing functions of the phone like the camera or microphone.

In addition to privacy, the parental controls on smartphones allow you to block or restrict certain apps, features, content, downloads or purchases that might not be suitable for young people. Setting limitations around age ratings, Siri and web searches enables you to filter out age-inappropriate content and vastly reduce the likelihood of your children being exposed to potentially upsetting material and information.

We have attached some guides on how to adjust these settings which we hope you will find useful, for both Android and Apple devices.



## Online Safety Information

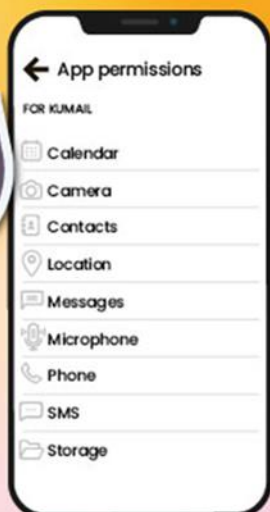
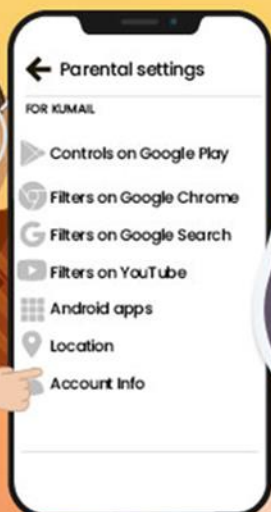
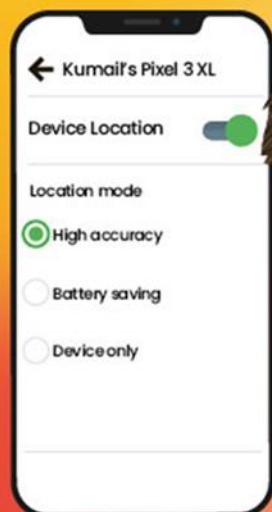
For Parents

Contributions by Mr Butler & Mr Lawman



# How to Set up PARENTAL CONTROLS for PRIVACY Android Phone

The settings on an Android device allow you to set certain rules to help safeguard your child's privacy when they are using it. For example, you can turn off location services to keep their whereabouts private; prevent third-party apps and sites from viewing their information; and stop apps from accessing other functions of the phone (like the camera or microphone, for example). We've produced step-by-step guides on how to tighten up an Android phone's privacy settings.



## How to manage location services

- 1 Open the Google Family Link app
- 2 Select your child's account
- 3 On the 'Settings' card, tap 'Manage'
- 4 Tap 'Location'
- 5 On the card with the correct device's name, tap 'Settings'
- 6 Tap 'Location Settings'
- 7 Turn 'Device location' to off
- 8 To reactivate location services in future, repeat these steps and turn 'Device location' back on

## How to control access for third-party apps and sites

- 1 Sign in to your Google Families account
- 2 Under 'Members', select your child's name
- 3 Select 'Account info' and then 'More'
- 4 Select 'Third-party apps with account access'
- 5 Turn 'Allow third-party apps to access XX account' to off by toggling the switch

## How to manage app permissions

- 1 Open the Google Family Link app
- 2 Select your child's account
- 3 On the 'Device' card, tap 'Settings'
- 4 Tap 'App permissions' then choose a permission
- 5 Below your child's device, switch the permission off

Alternatively, you can manage permissions for individual apps. Repeat steps 1 and 2, then...

- 3 On the 'Apps installed' card, tap 'More'
- 4 On the 'Allowed' list, tap the app you want to change the permissions for
- 5 Tap 'App permissions'
- 6 Switch the permission off



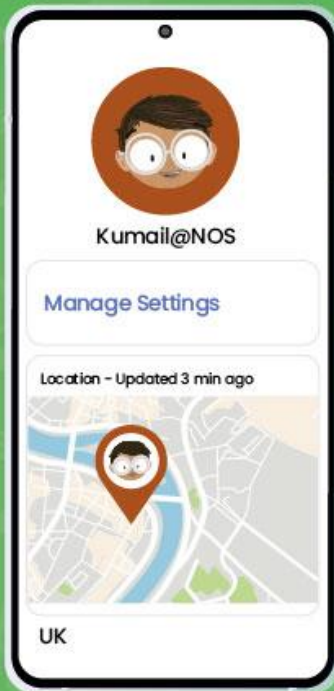
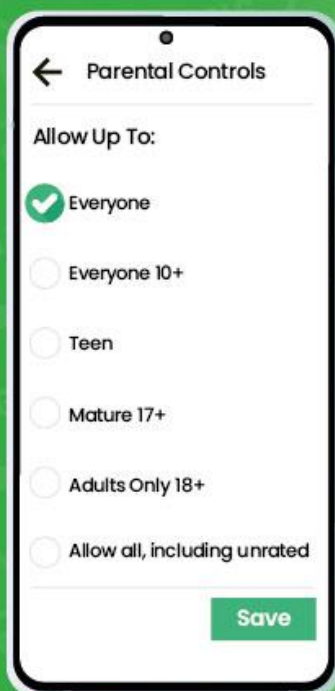
[www.nationalonlinesafety.com](http://www.nationalonlinesafety.com)

Source: <https://families.google.com/familylink/>

# How to Set up PARENTAL CONTROLS to limit age-inappropriate CONTENT Android Phone



The settings on an Android device allow you to prescribe certain rules for when your child is using it. For example, you can block specific types of content to reduce the risk of your child being exposed to age-inappropriate material (music with explicit lyrics, for instance, and games, TV shows or movies that are unsuitable for young people). There are two ways to access parental controls on an Android phone: through Google Play or via the Google Family Link app. You can also lock your changes behind a PIN, so your child (or anyone else) can't change them back.



## Set up parental controls with Google Family Link

- 1 On your phone, install Google Family Link for Parents
- 2 Tap Open and review the information
- 3 Tap Get Started
- 4 Tap Next to set up your child's device
- 5 On your child's phone, download Google Family Link for Children & Teens and enter the Family Link setup code provided
- 6 On your phone, open the Family Link app
- 7 Tap your child's name
- 8 Tap Manage Settings
- 9 Tap Controls on Google Play
- 10 Tap the content you would like to restrict
- 11 Choose how to filter or restrict access

## Set up parental controls with Google Play

- 1 Open the Play Store app
- 2 Tap Menu (represented by three horizontal lines)
- 3 Tap Settings
- 4 Tap Parental Controls
- 4 Enable Parental Controls
- 4 Create Pin
- 4 Tap the content you would like to restrict
- 4 Choose how to filter or restrict access





# How to Set up PARENTAL CONTROLS for PRIVACY iPhone



The privacy settings on your child's Apple device give you control over the information stored on it. This allows you to select which apps can access features and information on your child's device: for example, you might wish to block a social networking app from connecting to the camera reel, or specify which apps can use the device's location data.

## How to make changes to privacy settings

You can block certain apps from obtaining information from your child's device. You can also prevent your child (or anyone other than you) from altering these settings.

1 Open 'Settings'

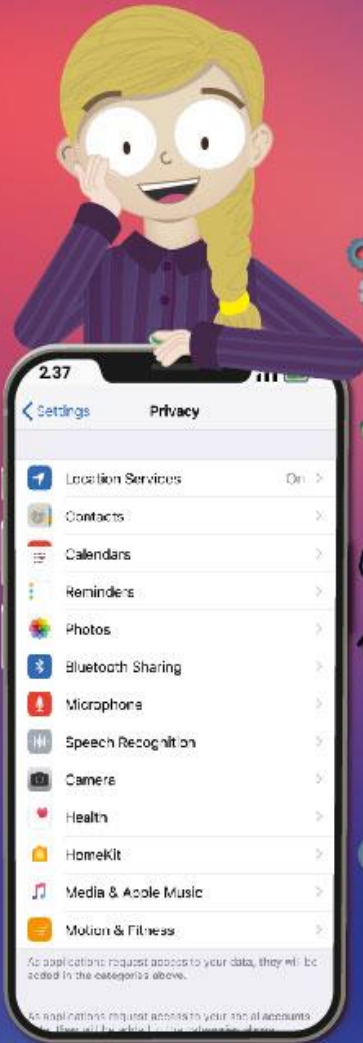
2 Tap 'Screen Time'

3 Tap 'Content & Privacy Restrictions'

4 Scroll to 'Privacy'

5 Choose the settings you wish to restrict

6 After you've made any changes, select 'Use Screen Time Passcode' to lock your changes with a PIN



## How to prevent changes to other settings/features

You can also stop changes being made to the iPhone's other settings or features by anyone but you. For example, you can prevent your child from altering their passcode, accounts or mobile data settings.

1 Open 'Settings'

2 Tap 'Screen Time'

3 Tap 'Content & Privacy Restrictions'

4 Scroll to 'Allow Changes'

5 Select 'Allow' or 'Don't Allow' on the settings for which you wish to enable or disable changes

